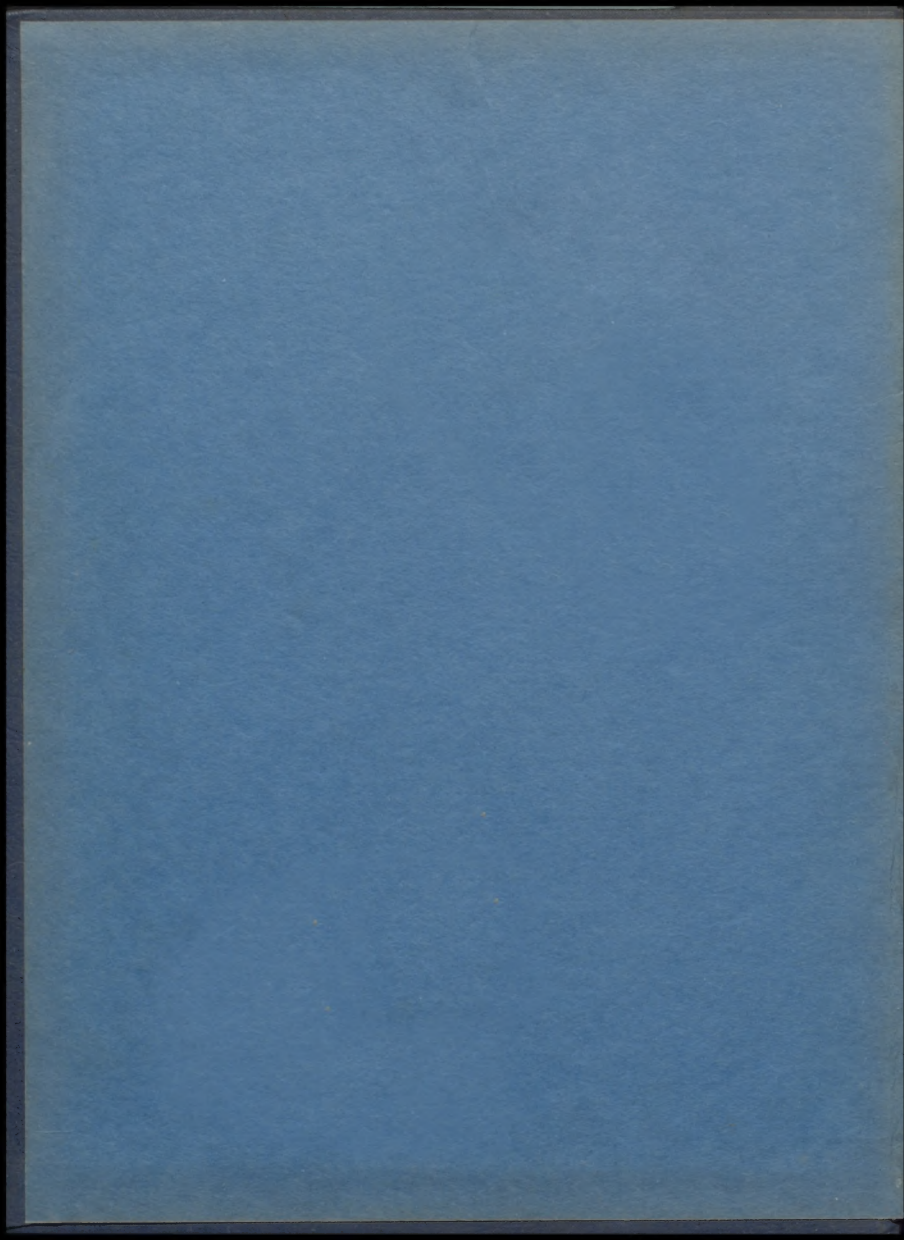
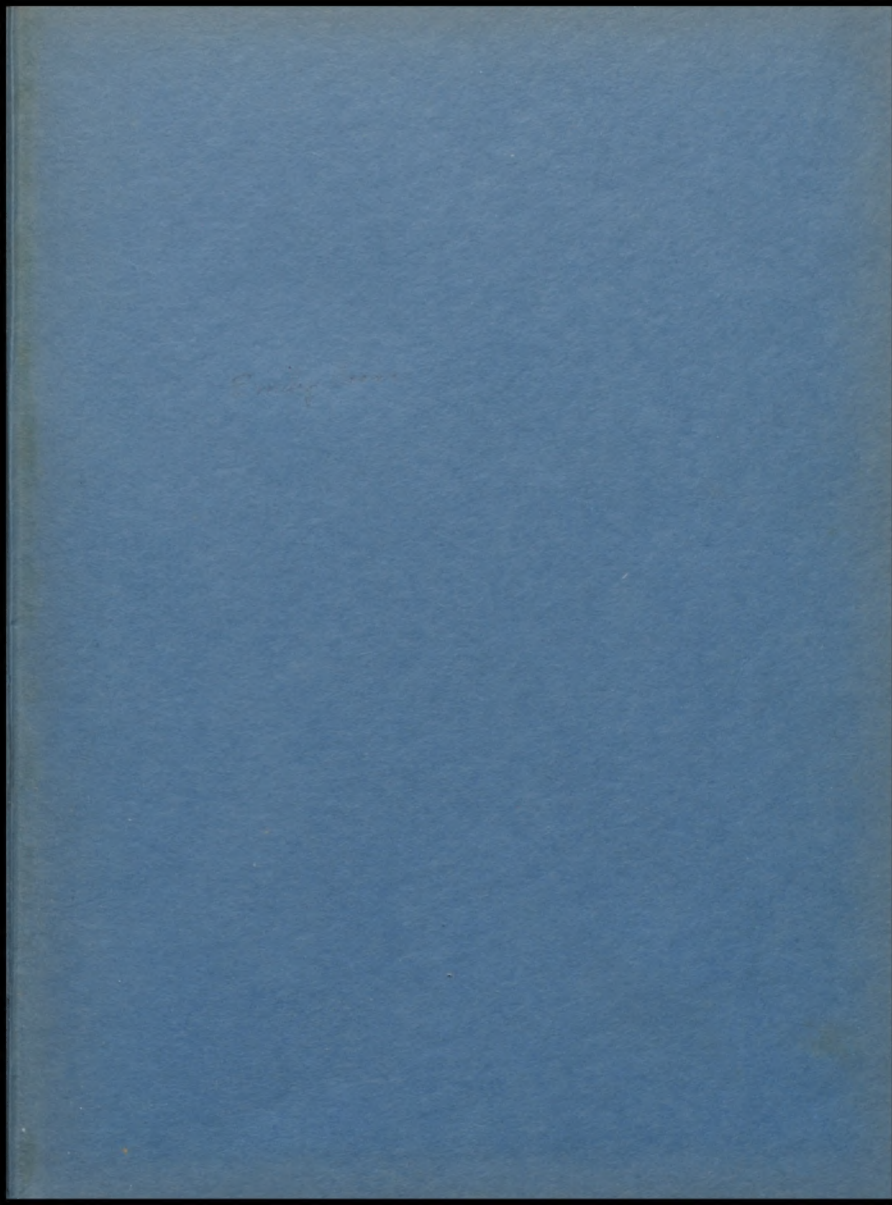
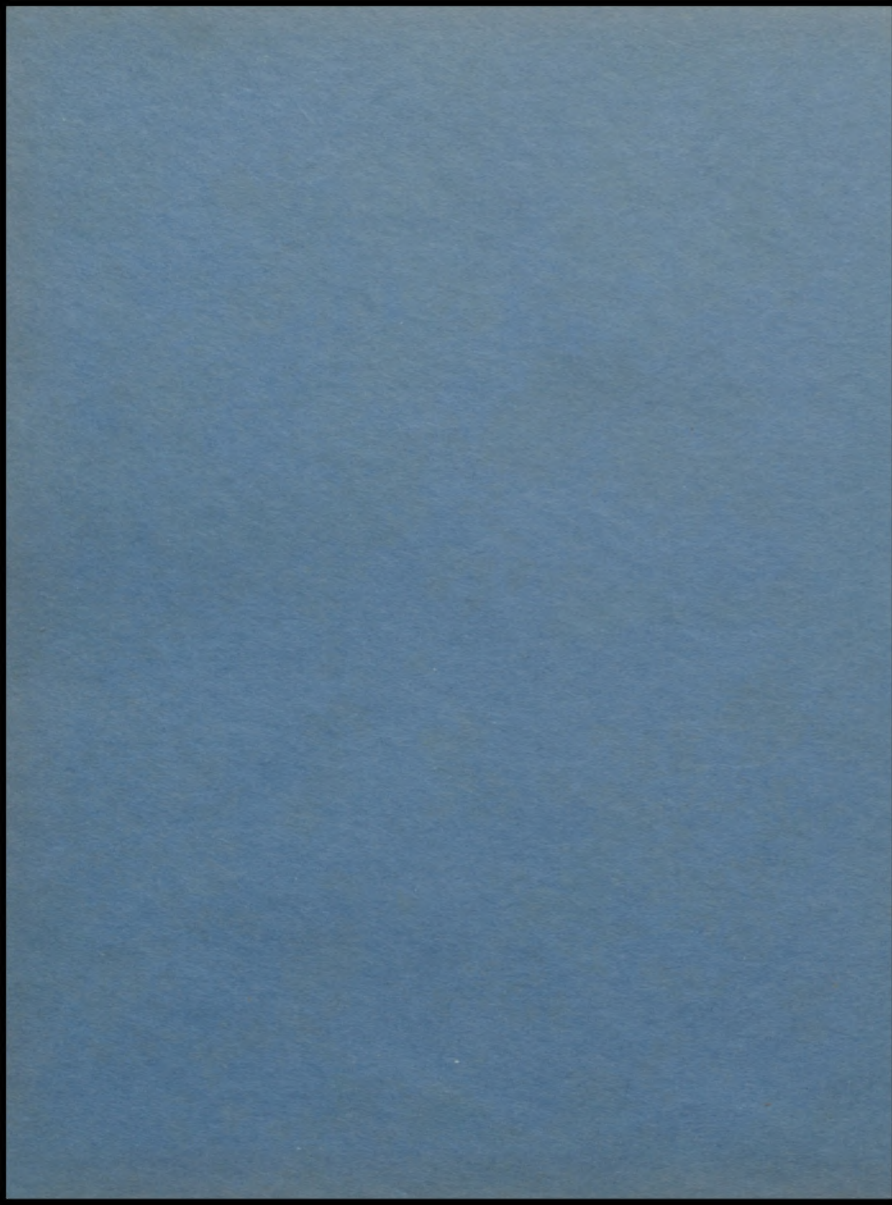




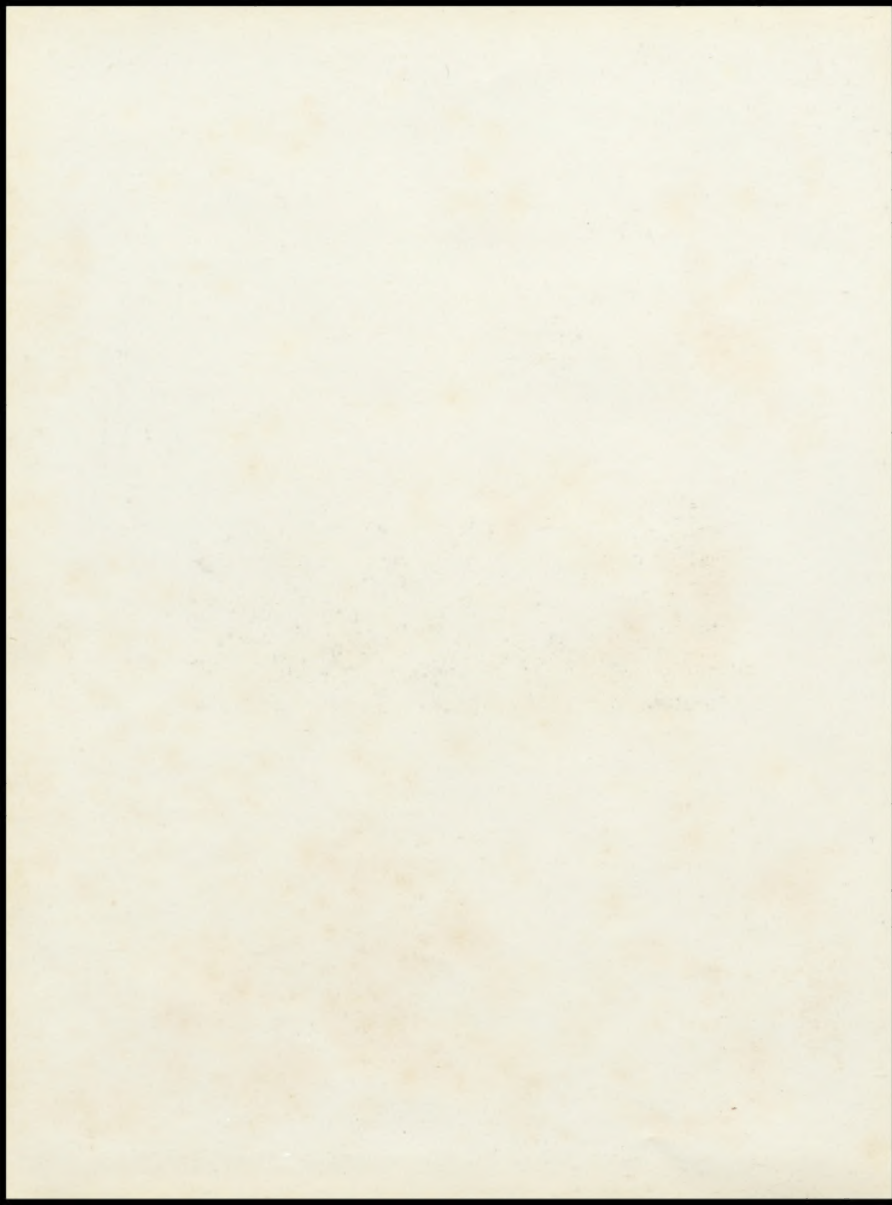
The Peanut
1933







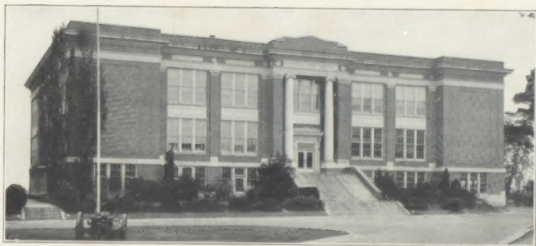
EX LIBRIS



THE PEANUT

VOLUME XI

NINETEEN HUNDRED
AND THIRTY-THREE



PUBLISHED BY
THE STUDENTS OF SUFFOLK HIGH SCHOOL
SUFFOLK, VIRGINIA

FOREWORD

WE, the Senior Class of Nineteen Hundred and Thirty-three, present this volume of THE PEANUT to you, our readers, for your approval. It has been our aim to portray in this limited space the most important activities that have taken place during our Senior year.

If in latter years, you, who have lived these events, review this volume, we hope it will bring back the pleasant days spent in "Ole Suffolk High."



DEDICATION

WITH gratitude for her whole-hearted untiring efforts in our behalf, with sincere appreciation of her personal worth, and with an abiding and deep affection for her, we dedicate this eleventh volume of THE PEANUT to

MISS ELIZABETH ELSEA



The Peanut Staff

JACK BROTHERS.....	Editor-in-Chief
BERNIECE JONES.....	Assistant Editor-in-Chief
CURTIS JOHNSON.....	Business Manager
HENLEY CHURN.....	Advertising Assistant
FRANCES EASON.....	Advertising Assistant
EDYTHE BALLARD.....	Advertising Assistant
AUBERT NIMMO.....	Advertising Assistant
VIRGINIA PEPPER.....	Literary Editor
HARRY HONEYCUTT.....	Assistant Literary Editor
HELEN CHURN.....	Photograph Editor
MARION BRADSHAW.....	Girls' Sport Editor
PARKER BROWN.....	Boys' Sport Editor
ELMO HOWELL.....	Joke Editor
ELIZABETH FANNEY.....	Typist
MISS HARGRAVE.....	Sponsor



T H E S C H O O L



1933

*Board of Education of
Suffolk Schools*

J. C. WEST, JR., *Chairman*



JOHN B. TAYLOR, *Clerk*



G. G. COULBOURN



W. S. BEAMON



J. E. RAWLS



T. H. DEBNAM





TRACY E. MARTIN
Superintendent
Suffolk City Schools



FRANCIS S. CHASE
Principal
Suffolk High School

Francis S. Chase



Faculty

LILLIAN WOODYARD, B.A.	Westhampton College
KATHRYN LINGO	Beacom College
ANN HARGRAVE, A.B.	Randolph-Macon Woman's College
BLONNIE JOHNSON, A.B.	William and Mary College
ELIZABETH ELSEA, B.A.	Westhampton College
GLADYS YATES, A.B.	Elon College
ESTELLE BEALE SEWARD, B.S.	University of Virginia
IRMA HURFF, A.B.	William and Mary College
ELIZABETH CHANDLER, A.B.	Westhampton College
THELMA PRUDEN, A.B.	Westhampton College
MARGARET DAUGHTREY, B.A.	Westhampton College
MYRA RAMSEY, A.B.	Winthrop College
ELIZABETH VINCENT	Farmville State Teacher's College
DAISY MITCHEL, B.S.	Farmville State Teacher's College
MAE BAILEY	Wesleyan College
DORA BRITT	Suffolk College
REED WEST, A.B.	William and Mary College
ANNA WITHERS, A.B.	William and Mary College
JOANNA RAWLS, A.B.	Woman's College of Alabama
WILBERT CROCKER, B.A.	University of Richmond
NANNIE BIRDSONG	Nansemond Seminary
MARY STALLING	Harrisonburg State Teacher's College
FRANCIS S. CHASE, M.A.	University of Virginia

Alma Mater

Suffolk forever!

Her fame shall never die;

Fight for her colors,

We'll raise them to the sky.

Each loyal son

Pledges her his heart and hand,

For her united

We as brothers stand.



C L A S S E S



the 1990s, the number of people in the world who are illiterate has increased from 1.1 billion to 1.2 billion. The number of illiterate people in the world is expected to reach 1.5 billion by the year 2015 (UNESCO, 2003).

There are many reasons for the increase in illiteracy. One of the main reasons is the lack of access to education. In many developing countries, the majority of the population lives in rural areas where there are few schools and no teachers. This means that many children are unable to attend school and become illiterate.

Another reason for the increase in illiteracy is the high cost of education. In many developing countries, the cost of education is very high, and many families are unable to afford it. This means that many children are unable to attend school and become illiterate.

A third reason for the increase in illiteracy is the lack of motivation. In many developing countries, the majority of the population is poor and has no money to spend on education. This means that many children are unable to attend school and become illiterate.

There are many ways to reduce the number of illiterate people in the world. One way is to improve access to education. This can be done by building more schools and hiring more teachers. Another way is to reduce the cost of education. This can be done by providing free or low-cost education to all children.

A third way to reduce the number of illiterate people in the world is to increase motivation. This can be done by providing financial incentives for children to attend school. Another way is to provide education in a way that is relevant to the needs of the community.

There are many other ways to reduce the number of illiterate people in the world. The most important thing is to make sure that every child has access to education and that every child is motivated to learn.

References
 UNESCO (2003) *Global Education Trends*. Paris: UNESCO.

Senior Class

Colors: Blue and Silver

Flower: Blue Bachelor's Button

Motto: "Make you the world a bit better and more beautiful because you have lived in it."

EDWARD BOK

LUCY WINGFIELD NORFLEET

President

PAGE HILL

Vice-President

VIRGINIA PEPPER

Secretary

CURTIS JOHNSON

Treasurer

MISS WOODYARD

Sponsor





LOISE HARRELL BABB
Peanut Hull Staff, Boosters Club



THOMAS EDWARD BAINES
Boosters Club, Baseball Team



THELMA ALICE BAINES



EDYTHE HOLMES BALLARD
Senate Award Committee, Stage Committee, Boosters Club, School Pianist, Annual Staff, Peanut Hull Staff



MARION VIRGINIA BRADSHAW
Basketball Team, Boosters Club, Senate Advisory Committee, Annual Staff



THOMAS HOLLAND BRITT
Peanut Hull Staff, Boosters Club, Senate Award Committee



JACK BROTHERS
Editor-in-Chief Annual, Senate Representative, President of Honor Awards, Boosters Club, Peanut Hull Staff



THELMA CLARK BROTHERS
Secretary of Senate, Boosters Club, Vice-President Honor Awards, Charter Committee of Boosters Club

EDWARD PARKER BROWN

President Student Senate, Manager
Baseball Team, Captain Football
Team, Basketball Team, Boosters
Club, Annual Staff, *Peanut Hull*
Staff, Senate Advisory Committee

EVELYN VIRGINIA BURCHETT

Basketball Team, *Peanut Hull* Staff,
Boosters Club

HELEN ESTELLE CHURN

President Boosters Club, President's
Council, Cheer Leader, *Peanut Hull*
Staff, Annual Staff, Spring Play

HENLEY W. CHURN, JR.

Baseball Team, *Peanut Hull* Staff,
Annual Staff, Boosters Club

MARTHA ELIZABETH CLARK

Peanut Hull Staff, Boosters Club

BERNICE LEE CONES

Boosters Club

FRANCES MAE COPELAND

Boosters Club

MARION AUSTIN CROSS, JR.

Football Team, Fall Play





FRANCES ELIZABETH EASON
 Editor of *Peanut Hull*, Manager
 Girls' Basketball, Boosters Club, Fall
 Play, Spring Play, Annual Staff



MARY ELIZABETH FANNY
 Annual Staff, Boosters Club



HENRY L. GARDNER, JR.
 Glee Club, Manager Boys' Basketball,
 Senate Advisory Committee, Boosters
 Club, *Peanut Hull* Staff, Manager of
 Tennis, Commencement Committee



ELIZABETH DARE HAYES
 Boosters Club



GERALDINE PAGE HILL
 Vice-President Class '33, Boosters
 Club, Senate Advisory Committee



HARRY McC. HONEYCUTT
 Annual Staff



NANCY LEIGH HOWELL
Peanut Hull Staff, Boosters Club



ANNIE LOUISE HUDGINS
 Boosters Club, *Peanut Hull* Staff

FABIUS CURTIS JOHNSON

Business Manager of Annual, *Peanut Hull Staff*, Boosters Club, Treasurer of Class '33

LILLIAN FRANCES JOHNSON

Basketball Team, Fall Play, Boosters Club, *Peanut Hull Staff*

VIRGINIA BERNIECE JONES

Annual Staff, *Peanut Hull Staff*, Boosters Club

GARLAND EVANS JONES

Boosters Club

CLAUDE CLIFFORD LILLY, JR.

Boosters Club

ISABEL PAYNE MATHEWS

Peanut Hull Staff, Boosters Club

ROSE LEE MILTEER

Boosters Club

GERNON AUBERT NIMMO

Annual Staff, Spring Play, *Peanut Hull Staff*, Assembly Committee, Honor Awards Committee, Commencement Committee, Senior Debating Team





LUCY WINGFIELD NORFLEET
President of Class '33, Secretary-
Treasurer Boosters Club, *Peanut*
Hull Staff, Senate Advisory Com-
mittee



BRUCE OLIVER
Football Team, Captain Basketball
Team, Baseball Team, *Peanut Hull*
Staff, Glee Club



JAMES HODGES PARKER
Boosters Club



VIRGINIA FRANCES PEPPER
Secretary of Class '33, Boosters Club,
Annual Staff, Assembly Program
Committee, Honor Award Committee,
Fall Play, Senate Representative



OSCAR GLAZIER PILAND
Football Team, Basketball Team,
Baseball Team, Spring Play, Student
Senate, Boosters Club, *Peanut Hull*
Staff



VIRGIE HOLLAND PILAND
Boosters Club



CHARLES BAILEY POND, JR.
Peanut Hull Staff, Boosters Club,
Tennis Team



HELEN SHEPHERD RIDDICK
Boosters Club, *Peanut Hull* Staff

CATHRINE CECELIA SMITH
Boosters Club, *Peanut Hull Staff*



CHARLES WILLIAM SMITH
Boosters Club



ELLA LOUISE SMITH
Boosters Club



VIRGINIA WILLIS SPAIN
Boosters Club



EDYTHE LOUISE V. VOLPER



RACHEL ALMINA WILLS
Basketball Team, Boosters Club, *Peanut Hull Staff*



FRANCES WOODWARD WILSON
Peanut Hull Staff, Boosters Club,
Basketball Team



Class Song

Tune: "Auld Lang Syne"

1
Should old acquaintance be forgot,
And never brought to mind,
Should old acquaintance be forgot,
And days at Suffolk Hi?

Chorus

For Suffolk Hi we'll always
Stay in our memories;
The friendships made in S. H. S.
Will never, never end.

2
And here're our hands in friendship given,
Our hearts will always lie
With thoughts of love and tenderness,
For the days at Suffolk Hi.

3
To teachers and to classmates too,
We'll make a hearty toast
To Suffolk forever
In our hearts we'll always boast.



Senior Superlatives

Best Looking
PAGE—CHARLES

Most Studious
VIRGINIA—EDWARD

Best All 'Round
FRANCES—PARKER

Wittiest
CATHRINE—HODGES

Best Dancers
HELEN—GLAZIER

Most Popular
HELEN—GLAZIER

Most Loyal
JACK—PARKER

Most Athletic
RACHEL—BRUCE

Cutest
ROSE LEE—AUBERT

Senior Prophecy

A MEETING called by City Manager Parker Brown, of all Suffolk High School graduates of 1933 will be held on May 1, 1943, in the Suffolk High School auditorium, Suffolk, Virginia." Your announcer, Henry Gardner. Your station, S. H. S.

It is the first thing I have heard from my ole school mates in over seven years. I must not miss this meeting. I just can't wait for the time to come when we will be together again. There is a plane leaving Roosevelt Field going South Friday at 6:00 A. M., and it will land in Suffolk, Friday at 5:00 P. M. I must get ready. I couldn't miss such a treat.

After a long and tiresome journey, the plane landed at 5:00 P. M., and I was the first to get off. One look in the sky, which was thickly dotted with skyscrapers, gave me knowledge that the Class of '33 had really made Suffolk a prosperous city.

As I walked into the office to get my baggage, which had been sent by another plane, I noticed an aviator standing against the counter talking to the stenographer. He looked around and who do you think it was—Claude Lilly. He grabbed me in his arms and gave me a hearty welcome to the "World's Largest Peanut Market"—Suffolk. I stood there dumbfounded when someone else gave me a slap on the back—Elizabeth Hayes who was Claude's stenographer.

"Would you have known it to be the same place?" asked Claude. "This is what the Class of '33 has helped do."

"I would never have dreamed that such an improvement could have been made. I must see every nook and corner before I leave."

"Come with me," offered Claude, "and I will show you everything and everybody you ever knew. I know City Manager Parker Brown will be delighted to see you, as your presence will make our meeting one hundred per cent in attendance."

We got in his Baby Lincoln and went flying up North Main street, which had been beautified by widening the street and planting beautiful shade trees along each side. Claude stopped in front of the Hotel Elliott, which had been beautifully remodeled, and took my baggage in. He told me that Curtis Johnson was manager, and he knew I would get all the service I needed, and that I would enjoy being there. Curtis was as glad to see me as I was to see him. Claude told me that he would be back after dinner, and we would go to the meeting together.

As I walked through the lobby I noticed a large poster on the bulletin board with a face on it that looked very familiar. It was none other than "Flinky" Piland, coach of Suffolk High School's teams, which was giving a baseball game Saturday at 3:30 o'clock.

I took the elevator up to the fifth floor. After dressing, I went down for dinner. The dining room was full of people, but they were all strangers to me.

Claude was right on time. We got in his Baby Lincoln and went shooting down Saratoga street to the school. I thought I was in front of the Empire State building. I would have never recognized it as the branch that we used to play in, for it had been filled in and an annex built to the old high school. We took the elevator up to the third floor which the main auditorium was on.

Three loud cheers rang out as I entered the auditorium. I was never so surprised to think that no one had forgotten me during my long period of absence.

City Manager Brown gave a very interesting talk on "The Growth of the Peanut Market." Frances Eason, editor of the *Knows All*, Suffolk's daily paper, was there with her two most dependable reporters—Catherine Smith and Berniece Jones. Marion Bradshaw, manager of the "Silver Slipper Night Club," cordially invited us over after the meeting adjourned. Much appreciation was given Henry Gardner for the use of his microphone and his kind service of announcing.

After the meeting, we took the "Fresh Air Taxi," owned and operated by Hodges Parker and Edward Baines, over to the "Silver Slipper." Chief of Police Henley Churn with his assistant, C. B. Pond, guarded the place to make sure we enjoyed ourselves in peace.

A lively tune played by the "Cotton Club Comedians," directed by Aubert Nimmo, made us feel merrier than ever. Charles Smith very kindly served soft drinks from his up-to-date soda fountain during the evening. Helen Riddick, an instructor in dancing, gave us a number which included all of the latest steps even to the "Camel's Walk." Elythe Ballard, accompanied at the piano by Helen Churn, rendered a number of solos. Never had I in New York enjoyed an evening as much as I had this one spent in Suffolk.

The next morning I was invited over to the beautiful Laurel Cliff Country Club to play Suffolk's 1943 golf champion, Evelyn Burchett. Thomas Britt, president of the Helen Wills Tennis Club, gave me a number of new points in playing tennis.

How sorry I was that today was Sunday, and I would have to leave for New York. It was made a promise that there would be another reunion in 1953 and every member agreed to be present.

I boarded my plane and waved a Goodbye to the prosperous Class of 1933.

Junior Poem

*To Suffolk High, our Alma Mater,
We hail thee as our friend;
You brought us forward to this place
Where soon our school days end,
You bring us forth, as we help you,
And in the future will;
The Juniors praise and honor you,
Our friend and helper still.*

*For 'tis you, Dear Suffolk High, we praise,
To you we'll loyal be;
For you, the Junior Class, so true,
Her songs will ever raise.
For you are so grand and noble,
The best school in the land;
You are our Alma Mater
And for you we'll ever stand.*

OLIVIA YATES, '34



Junior Class

Colors: Rose and Silver

ELMO HOWELL.....
 PYM WILSON.....
 HELEN OLIVER.....
 JACK ARTMAN.....
 MISS YATES }
 MISS JOHNSON }
 MISS HARGRAVE }

President
 Vice-President
 Secretary
 Treasurer
 Sponsors

Jaffe, S.
 Mehalko, G.
 Pruden, B.
 Murden, C.
 Hogswood, W.
 Pearce, C. C.
 Robertson, H.
 Holland, A.
 Walker, E.
 Weaver, R.
 Wilkins, M.
 Wilson, P.

Oliver, H.
 Howell, E.
 Sheffield, V.
 Howell, D.
 Fure, M.
 Pratt, R.
 Carroll, J.
 Faulkner, G.
 Baker, L.
 Ellis, M.
 Baine, E.

Yates, O.
 Yates, A.
 Laderberg, G.
 Whitley, H.
 Taylor, G.
 Murphy, J.
 Volper, V.
 Hethorn, E.
 Moore, A.
 Bell, M.
 Rawls, E.

Yates, C.
 Nimmo, V.
 January, H.
 Mitchell, J.
 Phillips, J.
 Parker, O.
 Harrell, D.
 Harrell, S.
 Oliver, L.
 Evans, G.
 Miles, H.

Sophomore Class

- MISS HURFF'S HOME ROOM
WILLIS RIDDICK.....*President*
- MRS. SEWARD'S HOME ROOM
JOYCE JACKSON.....*President*
- MISS CHANDLER'S HOME ROOM
VIRGINIA WILKINS.....*President*



Freshman Class

- MISS PRUDEN'S HOME ROOM
POLLY PINNER.....*President*
- MISS MITCHELL'S HOME ROOM
JOE BERMAN.....*President*
- MISS DAUGHTREY'S HOME ROOM
EDITH FOSTER.....*President*
- MISS RAMSEY'S HOME ROOM
KITTY BAINES.....*President*

A decorative vertical element on the left side of the page, consisting of a series of thin, parallel white lines that form a vertical bar. This bar is positioned to the left of the word 'ACTIVITIES' and extends both above and below the text.

ACTIVITIES

Organizations

1. THE BOOSTERS CLUB
2. WINNERS OF HONOR AWARDS
3. THE SPRING PLAY
4. PEANUT HULL STAFF
5. BOYS' BASKETBALL TEAM
6. GIRLS' BASKETBALL TEAM
7. FOOTBALL TEAM
8. BASEBALL TEAM



THE BOWSTERS CLUB

4111

Boosters Club

IN order to reduce somewhat the stress and strain of the student body's financial problem, we put in use this year the "Student Activity Fee." This fee was set by the Student Senate at two dollars cash or two dollars and fifty cents on the installment plan. A student paying this fee was entitled to be admitted to all the home-games of the football, basketball and baseball teams and two three-act plays. Mr. Wilbert Crocker was in charge of the ticket sale.

At the first meeting of all the pupils who had purchased an activities ticket, it was decided to name this organization the Boosters Club. Helen Churn was elected to lead the club and Elmo Howell and Lucy Norfiet were elected vice-president and secretary and treasurer, respectively.

A committee composed of Edythe Ballard, Helen Riddick, Virginia Willis Spain and Curtis Johnson was appointed to draw up the by-laws and aims of the club.

The main event of the year was the banquet and dance given by the club in honor of the Girls' and Boys' Basketball Teams. The banquet took place in the sewing room of the Domestic Science Department and dance was held in the high school gym. Music was furnished by Mammie Kelly and her orchestra. Both the dance and banquet were very successful.

The Boosters Club stands for the highest type of school spirit and loyalty interwoven with fairness and good sportsmanship. The aim of the club is to boost every worthwhile student movement, to raise the morale of Suffolk High and to improve the scholarship.

All the worthwhile movements made to improve the school have been sponsored by this organization. The Clean Up Campaign improved the appearance of both the halls and grounds of Suffolk High. The Better Assembly Programs Committee headed by Virginia Pepper and advised by Mrs. Seward has been very successful not only in improving the Chapel programs, but in bringing out the hidden talents of many pupils. The Pep Meetings have done much to boost the morale of the school.

Honor Awards

THE Student Senate's most outstanding work this year has been the creation of the honor award system. Although just an experiment, it has proven quite successful in Suffolk High School. Much of the credit should be given to the Senate for having accomplished the legislation necessary for the establishment of such a system. The motion was passed that all pupils having a certain scholastic average and being participants in the school's activities should be awarded some public recognition. It was decided that in order to be eligible for this distinction a pupil must maintain a scholastic record of at least two B's, with no mark lower than a C and must not have more than three absences or tardies.

Parker Brown, Aubert Nimmo and Mary Arthurs with Virginia Pepper, acting as chairman, and Mr. Chase, as adviser, formed a committee for the selection of those qualified. There were seventy-seven applicants: fifty-five girls and twenty-two boys. After a great deal of thought and deliberation, the committee agreed to make awards to fifteen girls and seven boys.

The basis for this selection was very important. Scholarship, while not the main factor, was considered gravely. A well rounded life for an average student was the real basis for the decision. A good scholastic record, participation in the various school activities, such as: the clubs, basketball, football and baseball teams, leadership, initiative and dependability were thought to characterize this well rounded life. Work outside of school such as music, art and so forth was taken into account.

A second committee composed of Helen Churn, Elmo Howell, Elsie Warrington, Harriet Eley and Gene Eve was formed to act as a check on the above mentioned committee whose selections proved to be satisfactory.

A special assembly was set aside for the presentation of the awards. Later the selected group met and organized with the intention of continuing their work, in an effort to inspire other pupils. The organization induces greater achievement and fosters a more friendly attitude between teachers and students. It is our earnest hope that the honor award system will be kept active in Suffolk High School.



Honor Award Pupils

JACK BROTHERS *President*
 THELMA BROTHERS..... *Vice-President*
 MARGUERITE BELL..... *Secretary*

Lillian Smithers
 Lucy Norfleet
 Thelma Brothers
 Henry Gardner
 Jack Brothers
 George Mehalko
 Hatton Robertson
 Hume Woodward
 Joyce Jackson
 Anne Cross
 Jane Harris

Pym Wilson
 Betty Butler
 Betty Ball Lummis
 Marguerite Bell
 Bill Cross
 Martha Virginia Elam
 Doris Swain
 Vivian Zienke
 Langford Jones
 Elsie Berry Yates
 Rachel Crocker



“Who Wouldn't Be Crazy?”

CAST

HUME WOODWARD.....	Inmate No. 1
MARGUERITE BELL.....	Inmate No. 2
ALVA WILCOX (general utility man).....	Pluribus
HELEN CHURN (colored maid).....	Pendic
FRANCES EASON (head nurse).....	Miss Lovell
C. C. PIERCE (superintendent).....	Mr. Higgins
AUBERT NISMO (of the board of directors).....	Mr. Marshall
ELMO HOWELL (his son).....	Jack, Alias “Speedy”
BETTY BALL LUMMIS (a visitor).....	Lois Meredith
GEORGE MEHALKO (an admirer of Lois).....	Reggie Mortimer
BEATRICE	{ Emmaline Rawles Harriet Brown Edith Council
MARJORIE } (friends of Lois)	
JANET } (friends of Lois)	
MARGARET HUTTON (a wealthy patient)	Evelyn Winslow
GLAZIER PILAND (a policeman).....	Hardboiled McCafferty
ARCHIE MARTIN (Evelyn's fiance).....	Edward Gordon

Time: June 1 and 2 of the present year.

Place: The courtyard of the Good Samaritan Sanitarium, near New York City.

DIRECTORS

MISS MARGARET DAUGHTREY

MISS ELIZABETH CHANDLER



Peanut Hull Staff

FRANCES EASON/		<i>Editors-in-Chief</i>
IRA MOORE }	
BERNIECE JONES/		<i>Assistant Editors</i>
ALICE MOORE }	

EDITORIAL BOARD

DOROTHY HOWELL	S. H. BARR
ELSIE WARRINGTON	AUBERT NIMMO
MARTHA CLARK	ISABELLE MATHEWS
ELMO HOWELL	CARNEY PIERCE
CURTIS JOHNSON	FRANCES JOHNSON
HELEN RIDDICK	PYM WILSON
JACK BROTHERS }	<i>Typists</i>
ISABELLE MATHEWS }
MISS THELMA PRUDEN }	<i>Sponsors</i>
MISS BLONNIE JOHNSON }



Boys' Basketball

MR. HINES.....	Coach
HENRY GARDNER.....	Manager
IRVING OLIVER.....	Captain
C. C. PEARCE.....	Forward
PARKER BROWN.....	Forward
BRUCE OLIVER.....	Center
GLAZIER PILAND.....	Guard
LAWRENCE OLIVER.....	Guard

Substitutes: ELMO HOWELL, WILLIAM POWELL, JAMES POWELL, IRA MOORE, JOHN POWELL, SIDNEY JAFFE

SCORES

Suffolk.....52;	Oceana.....8	Suffolk.....40;	Newport News.....37
Suffolk.....53;	Whaleyville.....27	Suffolk.....28;	Maury.....26
Suffolk.....40;	Mumf.....34	Suffolk.....42;	Hertford.....25
Suffolk.....26;	Charlottesville.....21	Suffolk.....50;	South Norfolk.....16
Suffolk.....23;	Newport News.....31	Suffolk.....24;	South Boston.....21
Suffolk.....22;	Maury.....20	Suffolk.....41;	Hopewell.....20
Suffolk.....44;	South Norfolk.....29	Suffolk.....36;	Wilson.....30
Suffolk.....32;	Wilson.....31	Suffolk.....32;	Oceana.....20
Suffolk.....27;	Lawrenceville.....14	Suffolk.....27;	Thomas Jefferson.....26
Suffolk.....18;	South Boston.....23		
Suffolk.....30;	Danville.....35		
Suffolk.....31;	Hopewell.....30		
		Total.....767	Total.....543



Girls' Basketball

MED OLIVER	Manager
FRANCES EASON	Captain
MARGUERITE BELL	Forward
EVELYN BURCHETT	Forward
EMERSONE KROFF	Forward
VIOLET VOLPER	Jumping Center
MARION BRADSHAW	Side Center
RACHEL WILLS	Side Center
MARGUERITE BELL	Guard
MILDRED COOPER	Guard
VIVIAN BRITTON	Guard

Substitutes: WEST, JOHNSON, BAINES, CROCKER, and SUTTON

SCORES

Suffolk.....22: Smithfield	16	Suffolk.....22: Chuckatuck	30
Suffolk.....26: Windsor	10	Suffolk.....27: Morrison	11
Suffolk.....68: Oceana	9	Suffolk.....30: Holland	18
Suffolk.....26: Whaleyville	3	Suffolk.....31: Chuckatuck	22
Suffolk.....54: Morrison	8	Suffolk.....31: Oceana	11
Suffolk.....32: Chuckatuck	23	Suffolk.....28: William and Mary	
Suffolk.....29: Holland	15	Extension.....	19
Suffolk.....39: Hampton	12		
		Total.....465	Total.....207



Football

JACK TRAYLOR	Right Tackle	End
BOB FASON	Right Tackle	End
JOHN FERRER	Right Tackle	End
BERNARD BROWN	Right Tackle	Quarterback
MALCOLM DANFEE	Right Tackle	Fullback
MAYNARD JOHNSON	Right Tackle	Halfback
WALTER ROBINSON	Right Tackle	Halfback

Captain: PARKER BROWN
 Coach: L. M. HIGDON AND D. R. GIBBS
 Manager: FREDERICK BROWNLEY

Baseball

BILL JOHNSON	Pitcher	Second Base
GODWIN EARLY	Pitcher	Third Base
MARVIN DOLZER	Catcher	Left Field
LAWRENCE OLIVER	Outfield	Center Field
BREKER CHERRY	First Base	Right Field

Substitutes: L. JONES, BATMAN, M. JOHNSON, COX, HIGDON, KERR, BAIRD, GARRIS, A. JONES, PEARCE, WILCOX, BARRETT, WILSON, PIERCE

Manager: PARKER BROWN, D. DE WASSER, STANLEY ROSE



FINIS



ADVERTISEMENTS



the 1990s, the number of people in the UK who are aged 65 and over has increased from 10.5 million to 13.5 million (1990-2000) (ONS 2001).

There is a growing awareness of the need to address the health care needs of the elderly population. The Department of Health (2000) has set out a strategy for the NHS to meet the needs of the elderly population. This strategy is based on the following principles:

• To ensure that the NHS is able to meet the needs of the elderly population.

• To ensure that the NHS is able to meet the needs of the elderly population in a cost-effective manner.

• To ensure that the NHS is able to meet the needs of the elderly population in a way that is consistent with the values of the NHS.

• To ensure that the NHS is able to meet the needs of the elderly population in a way that is consistent with the needs of the wider community.

• To ensure that the NHS is able to meet the needs of the elderly population in a way that is consistent with the needs of the future generations.

• To ensure that the NHS is able to meet the needs of the elderly population in a way that is consistent with the needs of the world.

• To ensure that the NHS is able to meet the needs of the elderly population in a way that is consistent with the needs of the planet.

• To ensure that the NHS is able to meet the needs of the elderly population in a way that is consistent with the needs of the universe.

• To ensure that the NHS is able to meet the needs of the elderly population in a way that is consistent with the needs of the multiverse.

• To ensure that the NHS is able to meet the needs of the elderly population in a way that is consistent with the needs of the omniverse.

• To ensure that the NHS is able to meet the needs of the elderly population in a way that is consistent with the needs of the universe and the omniverse.

• To ensure that the NHS is able to meet the needs of the elderly population in a way that is consistent with the needs of the universe, the omniverse, and the multiverse.

• To ensure that the NHS is able to meet the needs of the elderly population in a way that is consistent with the needs of the universe, the omniverse, the multiverse, and the universe.

• To ensure that the NHS is able to meet the needs of the elderly population in a way that is consistent with the needs of the universe, the omniverse, the multiverse, the universe, and the omniverse.

• To ensure that the NHS is able to meet the needs of the elderly population in a way that is consistent with the needs of the universe, the omniverse, the multiverse, the universe, the omniverse, and the multiverse.

• To ensure that the NHS is able to meet the needs of the elderly population in a way that is consistent with the needs of the universe, the omniverse, the multiverse, the universe, the omniverse, the multiverse, and the universe.

• To ensure that the NHS is able to meet the needs of the elderly population in a way that is consistent with the needs of the universe, the omniverse, the multiverse, the universe, the omniverse, the multiverse, the universe, and the omniverse.

• To ensure that the NHS is able to meet the needs of the elderly population in a way that is consistent with the needs of the universe, the omniverse, the multiverse, the universe, the omniverse, the multiverse, the universe, the omniverse, and the multiverse.

• To ensure that the NHS is able to meet the needs of the elderly population in a way that is consistent with the needs of the universe, the omniverse, the multiverse, the universe, the omniverse, the multiverse, the universe, the omniverse, the multiverse, and the universe.

• To ensure that the NHS is able to meet the needs of the elderly population in a way that is consistent with the needs of the universe, the omniverse, the multiverse, the universe, the omniverse, the multiverse, the universe, the omniverse, the multiverse, the universe, and the omniverse.

• To ensure that the NHS is able to meet the needs of the elderly population in a way that is consistent with the needs of the universe, the omniverse, the multiverse, the universe, the omniverse, the multiverse, the universe, the omniverse, the multiverse, the universe, the omniverse, and the multiverse.

• To ensure that the NHS is able to meet the needs of the elderly population in a way that is consistent with the needs of the universe, the omniverse, the multiverse, the universe, the omniverse, the multiverse, the universe, the omniverse, the multiverse, the universe, the omniverse, the multiverse, and the universe.

• To ensure that the NHS is able to meet the needs of the elderly population in a way that is consistent with the needs of the universe, the omniverse, the multiverse, the universe, the omniverse, the multiverse, the universe, the omniverse, the multiverse, the universe, the omniverse, the multiverse, the universe, and the omniverse.

• To ensure that the NHS is able to meet the needs of the elderly population in a way that is consistent with the needs of the universe, the omniverse, the multiverse, the universe, the omniverse, the multiverse, the universe, the omniverse, the multiverse, the universe, the omniverse, the multiverse, the universe, the omniverse, and the multiverse.

Here WE ALL GO *To Hall*

TO *R.B. King*

JOS. P. HALL, INC.

AND

CARTER'S DRUG STORES

"The Stores That Value a Friend"

Complete Line of Drug and Drug Sundries
CIGARETTES, CIGARS, TOBACCOS AND CANDIES
PRESCRIPTIONS A SPECIALTY

Visit Our Soda Fountain

Our Courteous Service Will Please You

JOS. P. HALL, INC.

PHONES 60-61-62

AND

CARTER'S DRUG STORES

"The Stores That Value a Friend"

126 WASHINGTON SQUARE

SUFFOLK, VIRGINIA

PHONE 414

BALLARD & SMITH

"OLD RELIABLE"

SUFFOLK, VA.

O. S. SMITH, O. S. SMITH, JR., *Proprietors*

Helen O.: "Miss Woodyard says you have more money than sense."

C. B.: "That shows how crazy she is. I'm broke."

Helen: "Yes, she added that you were."

Compliments of

The Peanut Hull

CHRIS VANTURE, *Mgr.*

Compliments of

S. Levy & Sons

Compliments of

**Pitts Chadwick
Theatre**

**E. L. Baker Shoe
Company, Inc.**

SHOES

for the entire family

Miss Mitchell: "What is the Latin word for wine?"

James Ward: "Vinum."

Miss Mitchell: "Can you decline it?"

James: "Sorry, I never declined a drink in my life."

That reminds me of the Scotchman that took his son out of school because he had to pay attention.

**Real Good Dry Cleaning
TAYLOR & JONES**

CLEANERS AND DYERS

Hats Cleaned and Blocked

And Remember—It's Like New When We're Through

118 E. WASHINGTON STREET

SUFFOLK, VIRGINIA

Compliments of

Elbert P. Cofer

Miss Hargrave: "Are you learning anything?"

Gilmer E.: "No ma'am, I'm listening to you."

Gas

The Dependable Fuel

For all cooking operations, water heating, room heating and laundry work

It is quick, clean and convenient
"If it's done with heat, you can do it better with gas."

Suffolk Gas Co.

Compliments of

Bell-Eason Shoe Co.

Hodges: "Last night I made an awful mistake."

Henry: "What happened?"

Hodges: "I drank two bottles of gold paint."

Henry: "How do you feel?"

Hodges: "Guilty."

Hugh M.: "I dreamed last night that I died."

Archie M.: "Did the heat wake you up?"

Compliments of

Jimmy Melito

"The Hot Dog King"

131 S. MAIN ST.

Mary E. Horton

"The Shop That's Different"

173 N. MAIN ST.

Compliments of

**The
Economy Shoppe**

Mary Cross: "How did Bettie Ball get so tanned?"

Harriet E.: "She was in a spanking breeze."

Suffolk News-Herald

Afternoon Daily

Suffolk's Greatest Advertising Medium

We cover the Entire Trading Territory
with Three Automobile Routes
Member of The Associated Press

**Herff-Jones
Company**

*DESIGNERS AND
MANUFACTURERS*

of

CLASS JEWELRY

and

GRADUATION

ANNOUNCEMENTS

CUPS, MEDALS, TROPHIES

INDIANAPOLIS, INDIANA

Manufacturers of Suffolk High School
Jewelry

Compliments of

R. D. SANTO & COMPANY

Doorman (at Senior meeting):
"Who's there?"
Voice: "It is I."
Doorman: "No teachers allowed."

Compliments of
**Producers Peanut
Company**

Compliments of
**Naas & O'Neal
Bakery**

Edward B.: "I want your daughter for my wife."
Mr. ? : "And Sir, I am not willing to trade."

WEEK-END SPECIALS

CURB SERVICE

We All Go
to
RUSSELL'S
"SERVICE WITH A SMILE"

DRUG SUNDRIES

Tobacco

Candy

W. E. RUSSELL, *Manager*

MAIN AND BANK STREETS

TELEPHONE 1188

SUFFOLK, VIRGINIA

Drink
Coca-Cola
In Bottles



Suffolk
Coca-Cola
Bottling Works

Compliments of
The Cavalier Pool
Parlor

Leading Beauty Shop
OLLE DE BENEDICTIS, Prop.
Nestle's Circuline Permanent Wave
All Lines of Beauty Culture
SUFFOLK, VIRGINIA

Compliments of
Johnson's Pharmacy

Compliments of
Brinkley Ice Co.

Compliments of
THE SMOKER
Harvey & Bradshaw

Bernice J.: "My father is an elk,
a lion, and a moose."
Marion B.: "What does it cost
to see him?"

Compliments of
Insurance Department
American Bank & Trust Co.
HERMAN A. JONES, Manager

SOUTHERN OIL
COMPANY

Wholesale Distributors

of

Shell Petroleum
Products

and

Quaker State Motor
Oil

SUFFOLK, VIRGINIA

Why Not Buy From

The
LADIES' STORE

112-114 Main Street
Suffolk, Va.

McKAY'S

McKay-Washington & Company



They show the latest styles
and the prices are right

Compliments of

Bob Savage's, Inc.

Lawrence O.: "I just got two orders from Mr. Lummis."
C. C.: "What were they?"
Lawrence: "Get out and stay out."

Compliments of

I. O. Hill & Company

The Home of Good Furniture

FUNERAL DIRECTORS

Day Phone 1186

Night Phone 1185

Miss Johnson: "If I keep on correcting you so often, I'll crack my voice."

George M.: "Then you will speak broken English."

Compliments of

Suffolk Iron Works

PROMPT
DELIVERY

CURB
SERVICE

Compliments of

Rountree's DRUG SUNDRIES

FRANKLIN AND WASHINGTON STREETS

PHONE 336

YOU WILL NEVER REGRET IT!



*You can't always depend upon the other
fellow's umbrella when it rains*

And you can depend still less upon the other fellow's bank account in case of necessity. But the thrifty individual who opens a savings account with us, and deposits something each week, will be able to raise his own umbrella when that "rainy" day comes.

Why not start this week?

We have a savings book waiting for you



**The National Bank of Suffolk
The Farmer's Bank of Nansemond
American Bank & Trust Co.**

SUFFOLK, VIRGINIA



THE IMPRINT *of* PRIDE

Bids for patronage on a basis of price alone get small response from people who know the true worth of good quality in PRINTING. They prefer to pay the slight difference in the cost of good printing over mediocre printing because of the vastly superior RESULTS obtained — and RESULTS, of course, are paramount.

•

BELL MADE ANNUALS are produced by skilled craftsmen to meet the most exacting requirements. But, measured by the standards of real service and satisfaction, they are, after all, the least expensive.

•

J. P. BELL COMPANY, Inc.

816 MAIN STREET . . . LYNCHBURG, VIRGINIA





